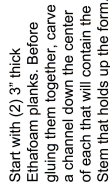


The Three Parts of the "System" *

The TORSO:

Made of planks of 2 Lb. Ethafoam, hot-glued together, carved as needed. Torso is covered first with Pellon, then with Stockinette. A Handle made of Loc-Line is inserted at the top of the Torso.

Stem lays in channels cut in each plank of foam



Start with (2) 3" thick Ethafoam planks. Before gluing them together, carve a channel down the center of each that will contain the Stem that holds up the form.

(Having a "Rake" and "Stem" allows for vertical adjustment when on display.)

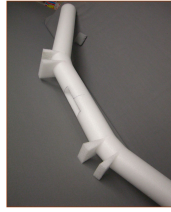
Rake with collar & set screw.
Stem has an 8" round steel base drilled with 6 screws; holes (not shown in photo)



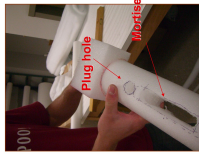
The Loc-Line Handle is glued into two holes drilled 2-1/2" deep into Torso.

The ARM-PIECE:

A 3" diameter Ethafoam "noodle" with a mortise slot (that slides over the Loc-Line Handle) and two plug holes (for the Headband) cut in; covered with Pellon and then Stockinette.



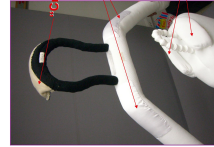
The arm-piece is nice with a bit of curve to the shoulders. Make one or two slices in the noodle where the shoulder is. Glue in a wedge of Ethafoam and carve to match the noodle's profile.



The arm-piece is covered the same as the Torso, but it may be good to also sew on some "speed stripes" (see photo below) out of pongee silk or taffeta to help glide the arm-piece through the artifact's sleeves.

The HEADBAND:

Made of Loc-Line covered in Pellon and small diameter Stockinette. Two plugs or dowels, made of 6 Lb. Ethafoam are hot-glued into each end of the Headband.



Plugs should be made out of 6 Lb. Ethafoam for the strength. I made them by "turning" strips on a sander before hot-gluing them into the open ends of the Loc-Line.

Pellon pillows covered in polar-fleece were sewn to the Headband to help shape the Parka Hood.

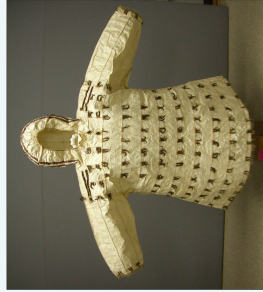
"Down pillow" to help support hood

"Speed Stripes"

Examples of extra pillows that help shape as needed

Mannequin System for Parkas

to minimize handling of fragile garments



Materials: Ethafoam, Pellon, Stockinette, Pongee Silk, Polar-fleece, Loc-Line, Steel "Rake & Stem"
Tools: Hot glue, Ethafoam Knives, Needle & Thread, Scissors, Tape Measure, Small Rounded Spatula

The Dressing Procedure

Lay the artifact on the table. Insert the Arm-Piece from one cuff through to the other. A hand in the neck can help move it along. Once the Arm-Piece is in, push it down away from the shoulders a bit to give room to maneuver the Headband into place.

First - the Arm-Piece:



Second - the Headband:

Going in through the neck, fit the Headband into the Arm-Piece. It is easy to feel with your hands the correct alignment of the 6Lb. Ethafoam plugs into their corresponding holes in the Arm-Piece.



Three - the Torso:

The Torso should be standing securely, it should be set to a proper height on the Stem so that the costume will not graze the ground. There should be a step ladder right by it.



2.



3.



Lift the artifact high over the torso. Have another person there to help open up the hem of the artifact over the Torso.

Now, reach into the neck of the artifact. With your hand in the Mortise in the Arm-Piece, lift the artifact up off the table. The Arm-Piece will act as a hanger. Very good!

Slip the artifact all the way down over the Torso. Secure the Lok-Line Handle into the Mortise you cut into the Arm-Piece. How easy is that!